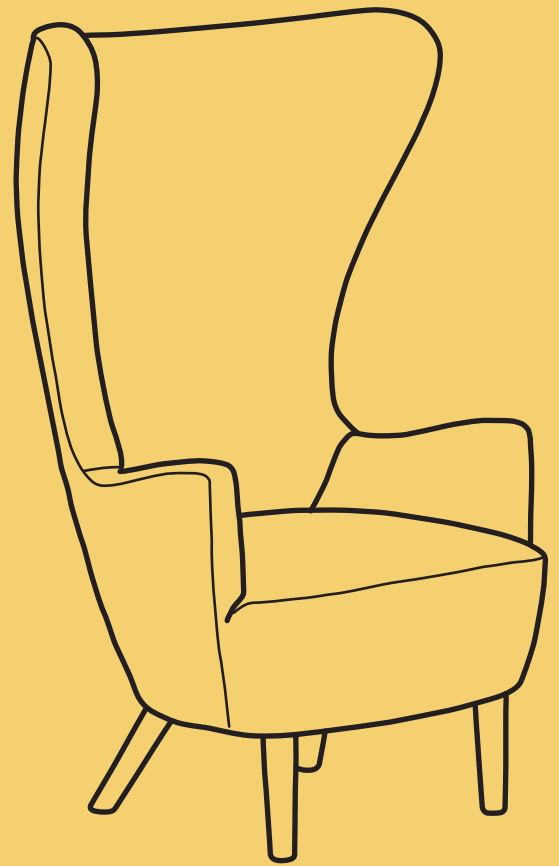


v1.0

BROSA



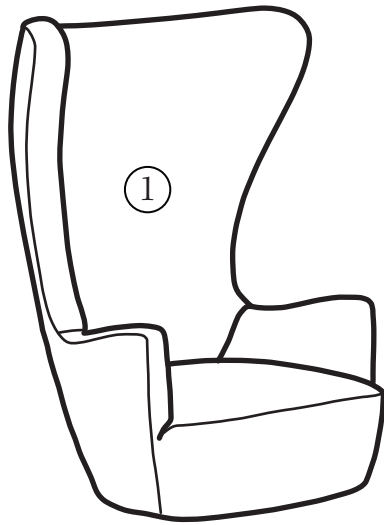
ASSEMBLY GUIDE

Globe Armchair

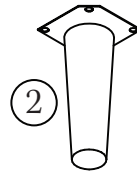
Components

Before you get started, check you have all of the pieces below. If anything's missing, please visit

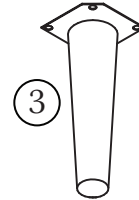
www.brosa.com.au/pages/product-return-and-parts-request and we'll sort it out right away.



Body x 1

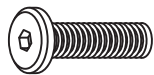


Front Leg x 2



Back Leg x 2

Hardware



A x 12



B x 12

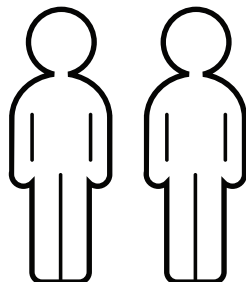


C x 12

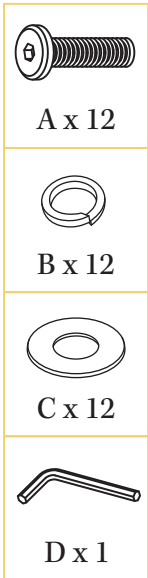


D x 1

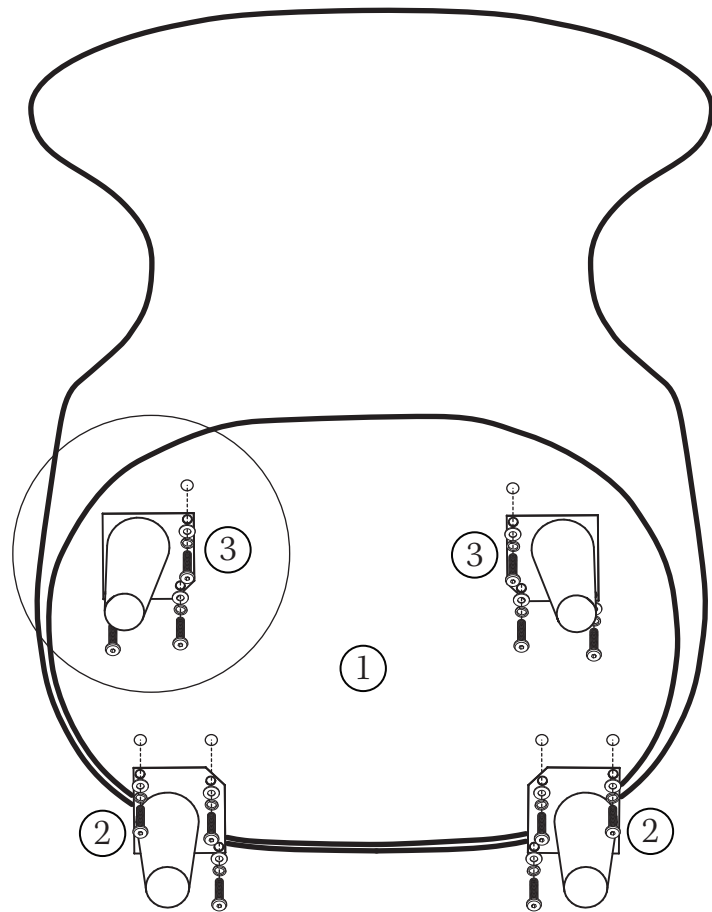
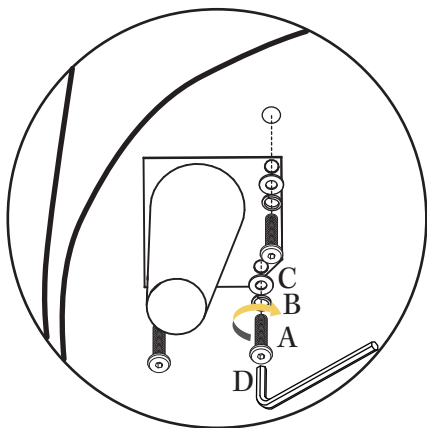
What you need



Step 1



Turn the armchair body (1) so that the underside is facing you. Align a back leg (3) with the holes on the back side of the bottom so that the holes overlap. Fit a spring washer (B) to a bolt followed by a flat washer (C). Insert the bolt (A) into the hole and fix it with the Allen key (D). Repeat this for the other two holes and then repeat the whole process for other legs.



Step 2

Turn the armchair the right way up and enjoy!

